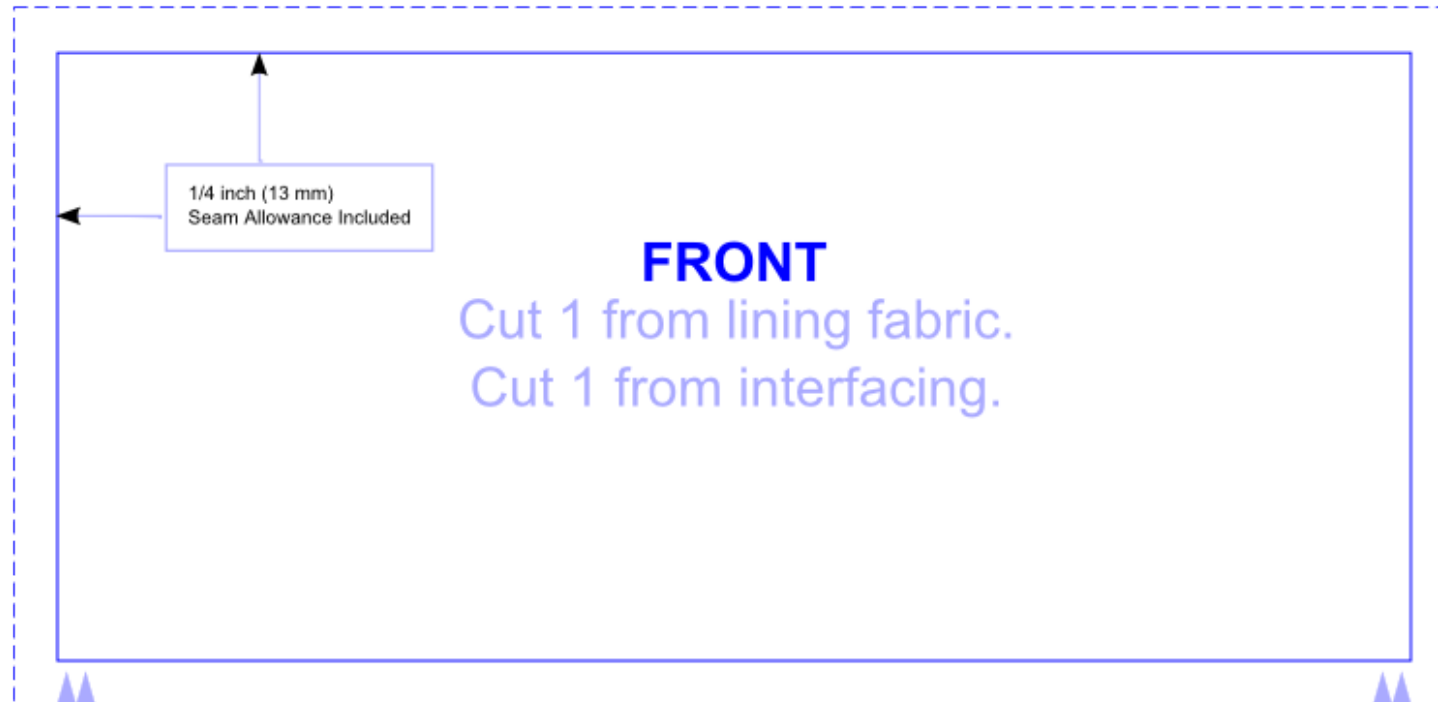


Pattern for Crocodile Clutch Lining

Page 1



Key:

- Cut line
- Seam Allowance
- ▲ Notch

Directions:

This pattern is only for the lining of the Crocodile Clutch. To purchase the crochet pattern go to: love-crochet.com.

For each piece cut one from lining fabric and one from fusible interfacing and clip notches. Fuse interfacing to fabric following manufacturer's instructions. With right sides facing sew bottom, top and side seams. (Take care not to sew sides of Top Flap to the side of Back or you will sew the bag shut!) Press Back and Front seam allowances on top bottom and sides to the back of the work and trim if desired. Press Flap seam allowances to the wrong side. Install magnetic snap closure according to manufacturer's directions. Hand stitch lining into crocheted bag using matching or invisible thread.

Pattern for Crocodile Clutch Lining

Page 2

